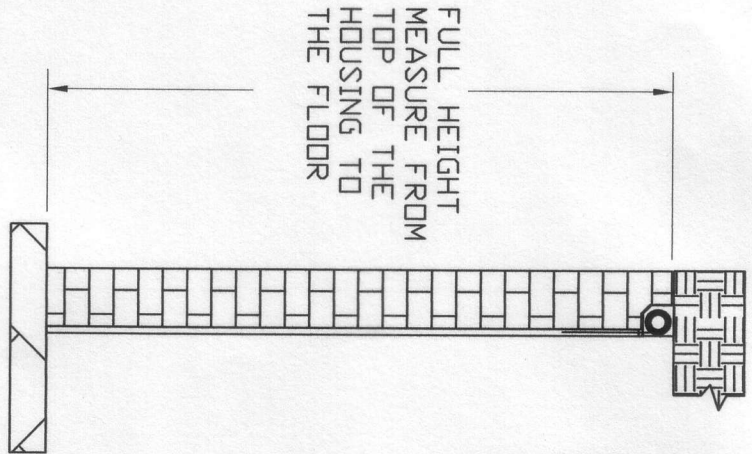
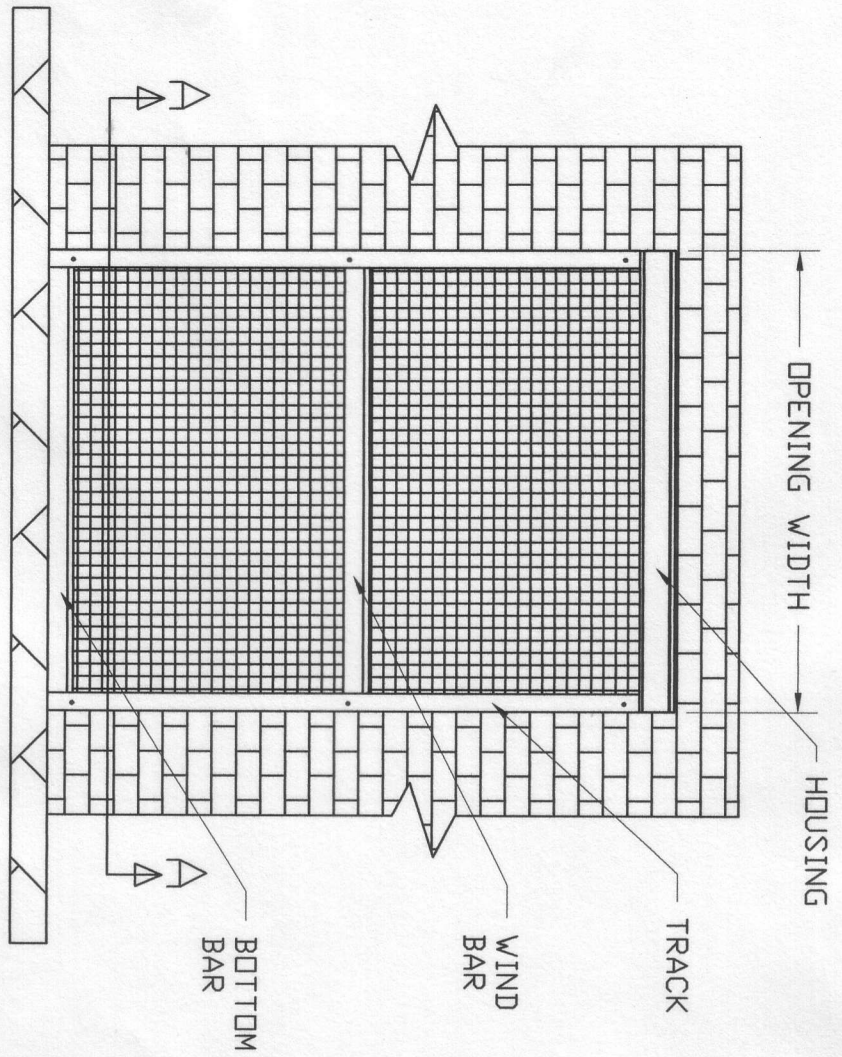
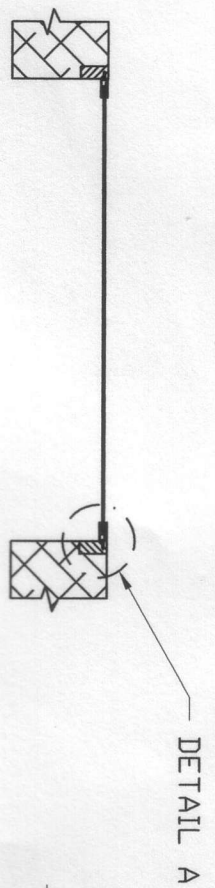


# MOTORIZED LARGE OPENING SCREEN FLUSH MOUNT INSTALLATION

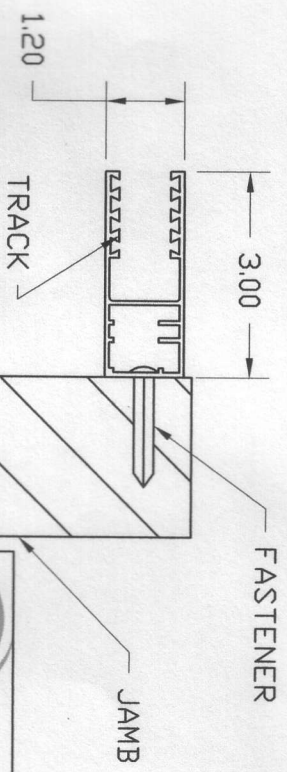


HOUSING SIZE  
FOR OPENING LENGTH:  
UP TO 19' 5 1/2" X 5 1/2"  
19' TO 25' 6 1/2" X 6 1/2"



## SECTION A-A

#8 OR #10 CORROSION RESISTANT  
FASTENER,  
8" TO 10" FROM TOP AND BOTTOM  
AND ONE IN THE MIDDLE ON EACH TRACK



## DETAIL A

