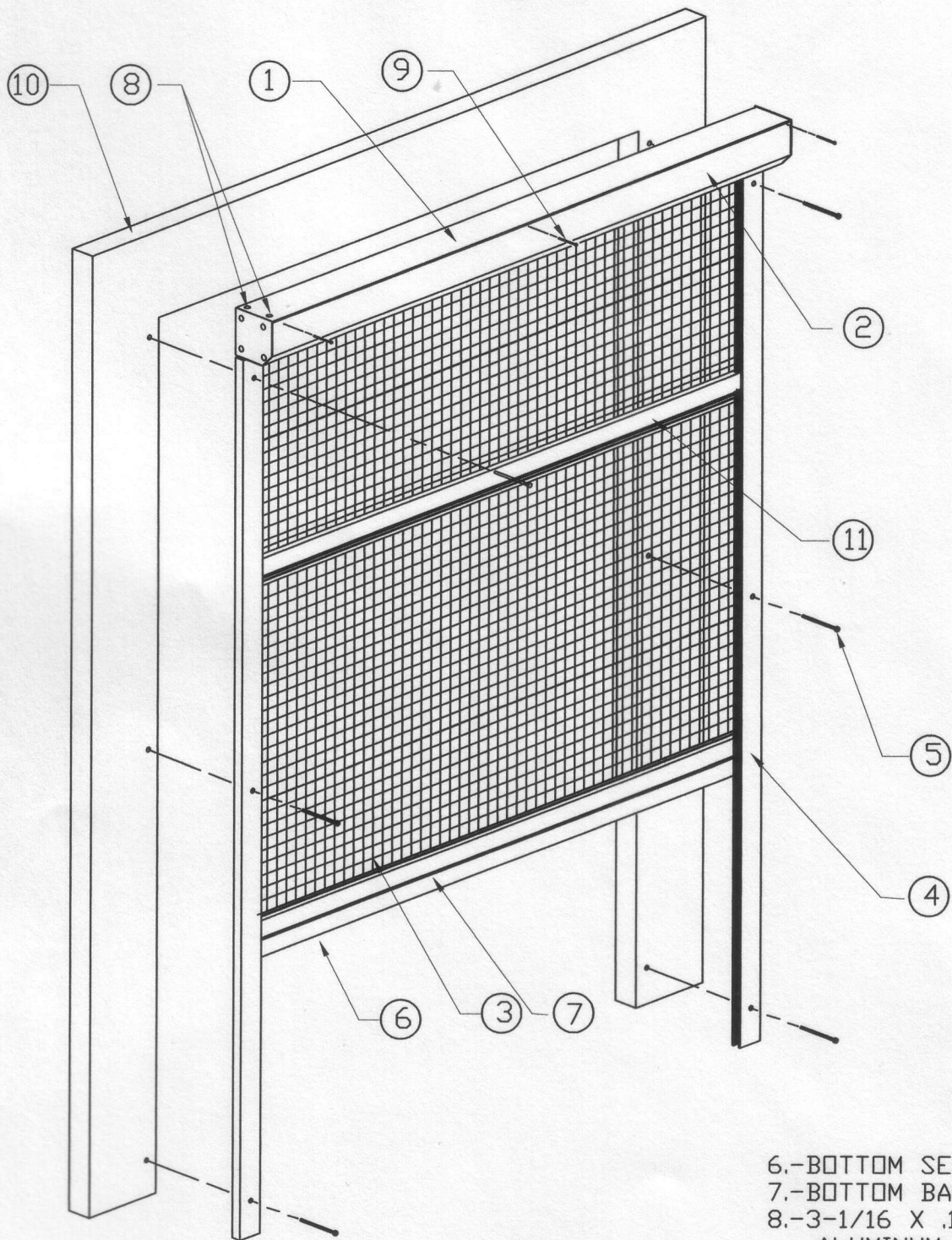


SURFACE (OUTSIDE) MOUNT ASSEMBLY



1.-HOUSING 5-1/2" X 5-1/2" FOR OPENING UP TO 19'
6-1/2" X 6-1/2" FOR OPENING 19' TO 25'

2.-COVER

3.-SCREEN MATERIAL

4.-STANDARD TRACK

5.-#8 OR #10 CORROSION RESISTANT FASTENER

6.-BOTTOM SEAL

7.-BOTTOM BAR

8.-3-1/16 X .126-250 GRIP
ALUMINUM POP RIVET

9.-#6 X 1/2" PANHEAD "TEK"
SCREW

10.-MOUNTING SURFACE

11.-WIND BAR

